

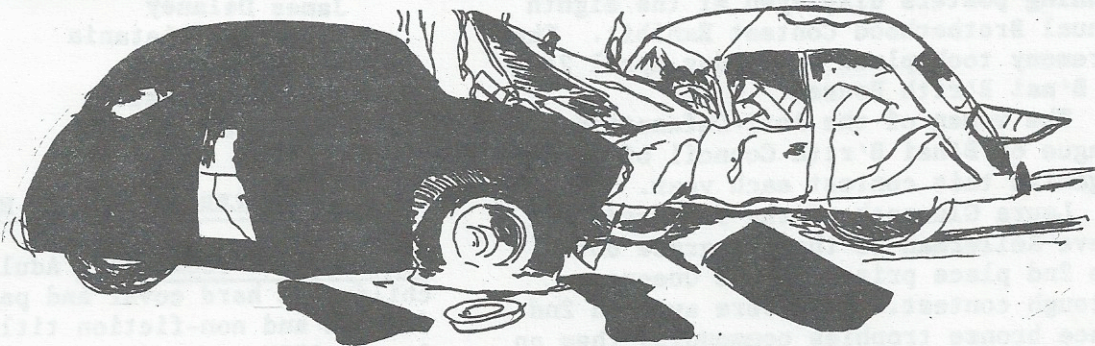
WED. JUNE 8, 1988

AT 5:30 P.M. IN FRONT OF P.S. 133

86th AVE. (between 248 & 249 street)

# **RALLY ROUND!! FOR TRAFFIC**

---



## **CONTROLS.**

---

86th Ave From Commonwealth Blvd.  
to Little Neck Pkway, Speedway.

Accidents have occurred in the vicinity  
of school and a man was killed while  
riding his bike.

**WE NEED SOME FORM OF TRAFFIC  
CONTROLS TO SLOW DOWN SPEEDERS,  
THE TRAFFIC DEPT. GIVES US LIP SERVICE,  
NOT ACTION.**