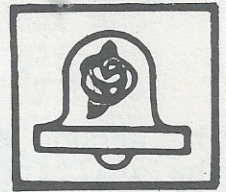


bellerose commonwealth civic association, inc.



action news

VOLUME NO 9

NOV

1982

CANDIDATES NIGHT

Our candidates night on Oct. 7th was well attended and generally a very successful affair. The candidates introduced themselves and entertained questions from the floor. Several of them were able to stay for coffee and pastries following the meeting and mingled freely with our residents.

Following is a list of the participants:

City Council - 16th District
Dem.-Councilman Sheldon Leffler (incumbent)
Rep.-Joan Garippa

State Assembly - 25th District
Rep.- Assemblyman Douglas Prescott (incumbent)
Dem.- John Duane

State Senate - 11th District
Rep.- Senator Frank Padavan (incumbent)
Dem.- Nicholas Garaufis

The state assembly race is the only one in which we have entirely new candidates. Due to revised district boundaries recently passed, Assemblyman John Esposito will no longer be representing our neighborhood.

Considering the success of this program we'd like to continue it in some form in future years.

Richard Hellenbrecht
Vice President

VOTE NOV. 2

QUEENS OUTREACH

In a previous issue of the ACTION NEWS we informed you of a community service to assist troubled young people and/or their families who might need help, regarding crisis intervention, drug and alcohol problems, schools, legal questions, jobs, vocational counseling, etc.

At our next meeting, Nov. 4th, our guest speaker will be Mr. John Sheehan, a representative of the QUEENS OUTREACH PROJECT who will talk about these problems, the part they play and what can be done in the home situation. Parents and youths are encouraged to attend and participate at this important meeting.

QCFM

The Queens County Farm Museum located at 73-50 Little Neck Pkwy. will be holding its annual Holiday Bazaar on Saturday and Sunday, Dec. 4th and 5th featuring handmade and hand-crafted items and also a cake sale. The hours will be 11 AM to 4 PM and admission is free. On Sunday the drawing for their annual raffle will be held at 12 noon and the annual tree and menorah lighting ceremony will be held at dusk.

Notice

THE NEXT MEETING

THURSDAY

NOV. 4, 1982

AT/ 8:00 P.M.

OPERATION OUTREACH

JOHN SHEEHAN

HOUSE OF HOPE
PRESBYTERIAN
CHURCH

Corner of 248th St &
85th Avenue

QCFM

The second session in the quilting series will begin in November, given by Julie Watson. The fee for this course is \$25 and you may choose to take your class either on a Wednesday or a Saturday from noon to 2 PM.

BELLEROSE LIBRARY
NEWS

November will be a busy month at the Bellerose Library. On Thursday, Nov. 18th, at 8:00 PM, we are proud to feature an unusual lecture and slide presentation on Modern China, seen from two perspectives, 1979 and today. Mr. Henry Salomon, President of the Board of Trustees of the Port Washington Library and Ms. Wen Chang, travel advisor, will conduct the program.

On the morning of Nov. 18th at 10:30 AM, our Adult Book Discussion will be "A Confederacy of Dunces", the Pulitzer Prize winning novel by John Kennedy Toole. Copies are available at the library.

Saturday, Nov. 20th at 2:00 PM, we are having our special family program on the Art & Music of Ancient Mexico and Peru with music, dancing, storytelling and ancient artifacts from the Rockefeller collection.

The monthly film for school-age, "Gnomes" and "Cow on the Moon", will be on Nov. 17th at 3:30 PM. Tickets will be available at the library.

Bellerose now features weekly Friday afternoon films for pre-school children ages 3-5 at 1:30 PM. No tickets are necessary.

We are ever enlarging our paperback and popular fiction collection and invite you to pay us a visit soon. Don't forget to inquire about our new computer and craft magazine subscriptions which are forthcoming.

Harriet Goldfluss
Branch Librarian

BE ALERT

The following is a reprint on an "awareness message" for travellers:

Park your car in a well-lighted area. Lock both your ignition and your doors.

When leaving a building to get to your car, have your keys in your hand ready to use.

Check before entering your car to make sure no one is hiding in the back seat. If you have a station wagon, check the luggage compartment.

Your windows should be rolled up and your doors locked when you are in your car.

If you think you are being followed, don't drive home! Immediately go to the nearest well-lighted all-night business and call for help. If you are sure you are being followed, **ATTRACT ATTENTION!** Honk your horn! Blink your lights! As long as your car is operable, stay in it. Keep the motor running.

If you have car trouble, raise the hood, wait inside the car with the doors locked and the windows rolled up. If a motorist stops to help, open your window slightly and ask him to call the police.

If you want to help someone in a disabled vehicle, don't get out of your car. Drive to the nearest well-lighted area and call the police.

Keep your car in gear while stopped at traffic lights. If someone tries to get into your car, drive away.

Do not pick up hitchhikers. Do not hitchhike yourself.

Avoid using public restroom facilities in parks, forest preserves, underground parking garages, or any other isolated areas. **DO NOT PERMIT YOUR CHILDREN TO ENTER PUBLIC REST ROOMS ALONE!**

THE "CATACOMBS"

It is 10 PM, Do you know where your teenagers are? Check the Catacombs!

There exists in Bellerose a large underground storm sewer large enough to drive a Mack truck through. Our teenagers have named this sewer the Catacombs.

This storm sewer acts to serve as a means to collect excess rain water and sewage. This excess waste water and sewage flows via this storm sewer to the main sewer for removal. One main section exists beneath Commonwealth Blvd. with smaller branches under many streets of Bellerose. These sewers can be entered through various steel manhole covers which exist all along the storm sewer route.

The purpose of this article is to alert both parents and teenagers of the dangers which exist by exploring these sewers. It has become a practice by some teenagers to enter these sewers, walk along them underground and then exit at another manhole cover along the route. It is quite appropriate that our youth have named these sewers the catacombs. Catacomb, by definition is an underground cemetery especially one consisting of tunnels with rooms for tombs. This sewer can easily become a tomb or death trap if explored by anyone who is inexperienced.

To obtain further knowledge, I decided to obtain further information from a Con Edison and Telephone Co. employee who at various times have to descend into the sewers to check cables and telephone lines. The following are the serious dangers which to not necessarily but often do exist at various times.

1. METHANE GAS - It is colorless, odorless and without question deadly. The gas forms in various areas where there is a breakdown of waste. This gas is flammable and can explode under the right conditions. Con Ed and the Telephone Co. will test for this gas before descending into any confined area beneath the ground.

2. DEAD AIR SPACES - These are pockets of air lacking sufficient oxygen to support life. It is very difficult to test for this problem. To avoid death, experienced utility men will force fresh air by means of compressors into the sewer before attempting to work there. The fresh air is maintained during the entire work cycle to prevent asphyxiation. I hope you teenagers are prepared for this problem.

3. TYPHOID FEVER - An infectious, often fatal disease caused by the Typhoid Bacillus. It can be transmitted person to person and arise in epidemic proportions. It prevails where there is waste,

sewage, gargage and unsanitary conditions.

4. RATS - Many rats live and expore our sewers. These pests cause and carry many diseases. They can bite causing nasty infections and serious wounds.

5. SKIN DISEASES - Decaying gargage and waste water harbor bacteria which can cause ugly rashes and difficult skin infections and lesions.

6. NATURAL HAZARDS - The base floor of sewers are wet, slimy & moldy. One can slip, fall and injure themselves. Heavy rains will cause floods, some backups and will tend to prevent gas from escaping. This gas will accumulate in pockets before it can dissipate naturally.

So parents, I ask you again - "Do you know where your child is?"

Signed,
A Concerned Civic Member



bellerose commonwealth
civic association, inc.

action news

PUBLISHED MONTHLY
EXCEPT JULY and AUGUST

JOHN REH,
Managing Editor

Address news items to:

George Wolf
President
86-15-247 St.
Bellerose, N.Y. 11426

**Today people need
more than just a bank.
They need services.**

252-25 UNION TPKE.
BELLEROSE, N.Y. 11426
(212) 347-7800



BAYSIDE FEDERAL SAVINGS
Member of FSLIC



**PLYMOUTH GAS
SERVICE CO.**
248-47 JAMAICA AVENUE
BELLEROSE, N. Y. 11426
212-347-3497

SALES SERVICE
GAS HEATING SPECIALISTS

GAS CONVERSIONS

WATER HEATERS • POOL HEATERS

7 DAYS • 7 NIGHTS

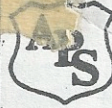
**CITY-WIDE SEWER &
DRAIN SERVICE CORP.**

• Cesspools Pumped

Sewers & Drains Electrically Cleaned

CEASAR RIBOLDI (212) 846-8788
GEN MGR. (516) 747-2344

248-49 Jam. Ave., Bellerose



**ALRICH
PROTECTIVE
SYSTEMS INC.**
(212) 423-9456

free estimate and survey
ANYTIME

Specialists In Concealed Wiring
Burglar, Fire And Intercom Systems
Residential And Commercial

**STUTZMANN
FUNERAL HOME**

2000 HILLSIDE AVENUE
NEW HYDE PARK, N. Y. 11040
516-352-3434

224-39 JAMAICA AVENUE
QUEENS VILLAGE, N. Y. 11428
212-465-3210

**FOR YOUR PERSONAL
BANKING**

**ROOSEVELT
SAVINGS
BANK**



MEMBER FDIC

247-53 JAMAICA AVENUE
BELLEROSE, N.Y. 11426
•212-347-1130•

JO-MAR TV lab
color * b&w
• stereo •
all makes
347-2515

BELLEROSE DELICATESSEN
CATERING FOR ALL OCCASIONS

247-73 JAMAICA AVE.
BELLEROSE 26, N. Y.
(NEAR COMMONWEALTH BLVD.)

FI 7-2023

R. LOVE
E. PURCELL

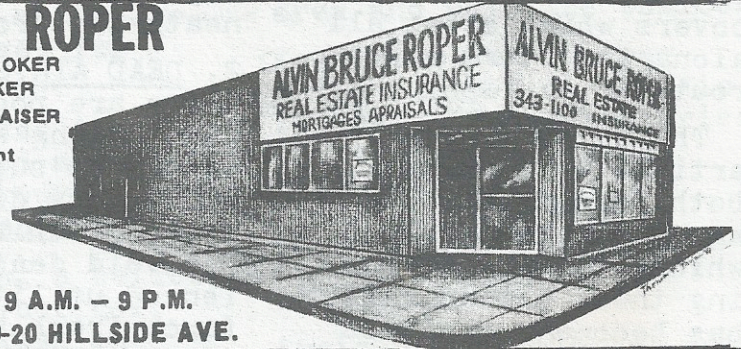
WE DELIVER

ALVIN BRUCE ROPER

LICENSED REAL ESTATE BROKER
LICENSED INSURANCE BROKER
SENIOR REAL ESTATE APPRAISER

53 Yrs. - A Bellerose Resident

Real Estate - Insurance
Apartments - Mortgages
Management - Appraisals



343-1100

9 A.M. - 9 P.M.
250-20 HILLSIDE AVE.

**Richmond Hill
Savings Bank**

HILLSIDE AVE
& 257th ST.

Floral Park, N. Y. 11004



**OERZEN CHIROPRACTIC
ASSOCIATES**

BY APPOINTMENT

TELEPHONE (516) 352-7111
(516) 352-7187
(212) 746-4737

248-36 JERICO TURNPIKE
BELLEROSE VILLAGE, N.Y. 11426



**COMPLETE PRINTING &
ADVERTISING CO., INC.**

Telephone: 516 437-5226

248-56 Jericho Turnpike, Bellerose, N.Y. 11426

**BELLEROSE OPTICAL
CENTER**

PRESCRIPTIONS FILLED

Contact Lenses

Examinations by Appt.

516 - 437-3839
212 - 347-7144

247-02 JAMAICA AVENUE
BELLEROSE, N. Y. 11001