



Parks

Bellerose Playground

Reading Garden

85th Avenue between 248th Street and 249th Street,
in the Borough of Queens.

Community Board Presentation

June 8, 2020

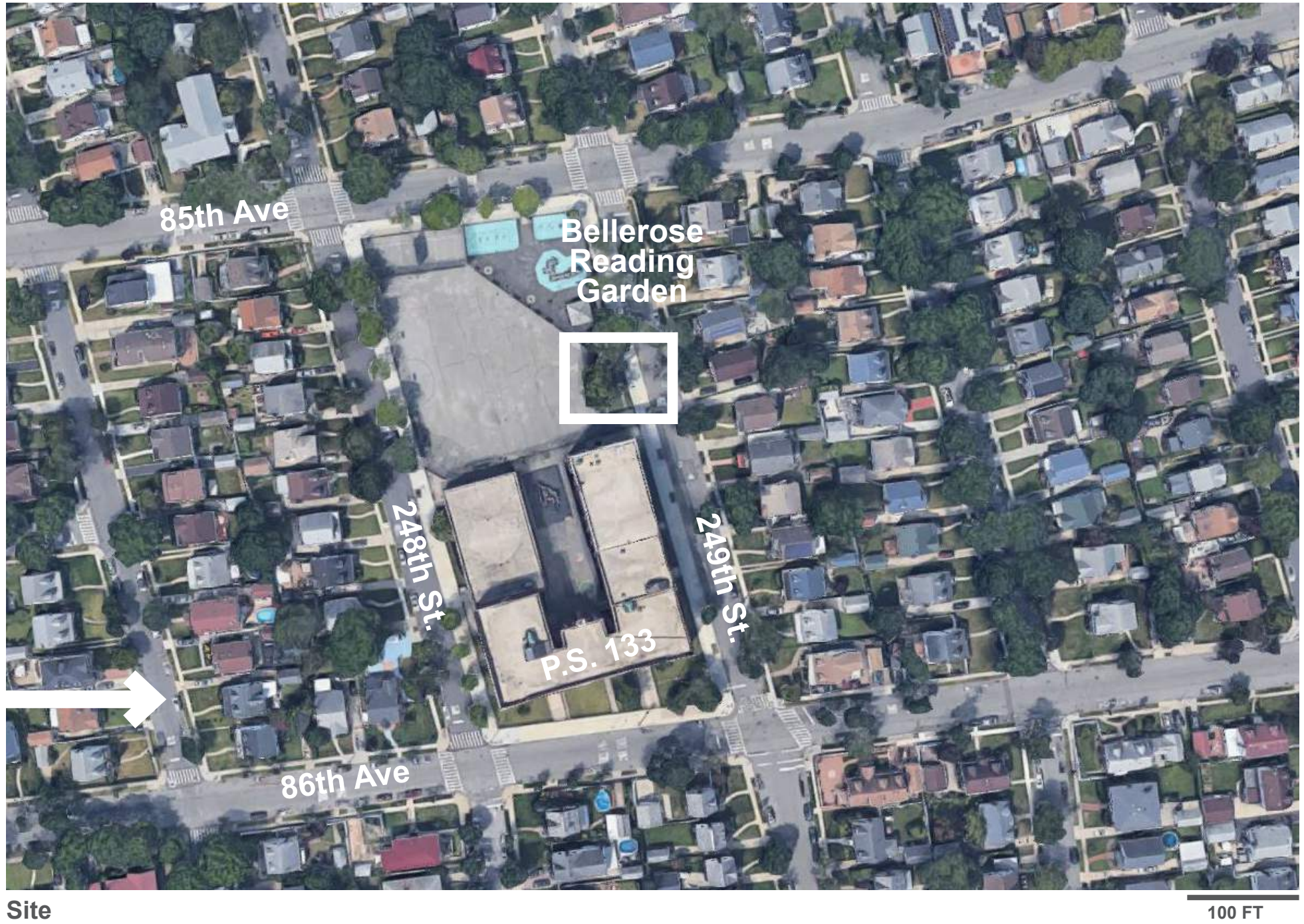
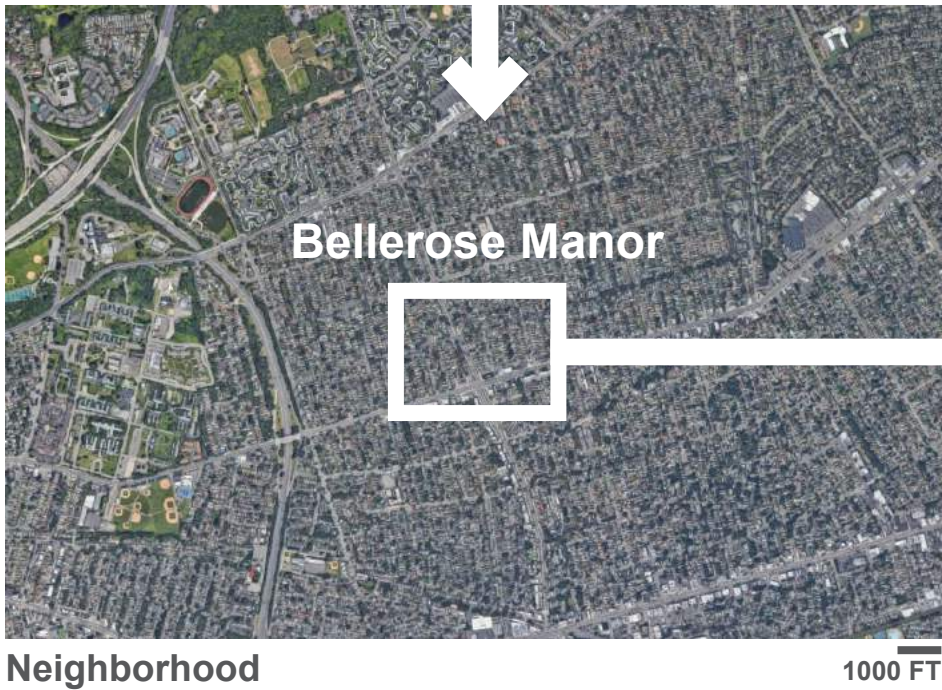
Amber Betances, NYC Parks

Total Budget: \$250,000 FY20
State and Municipality Facilities Program Grant

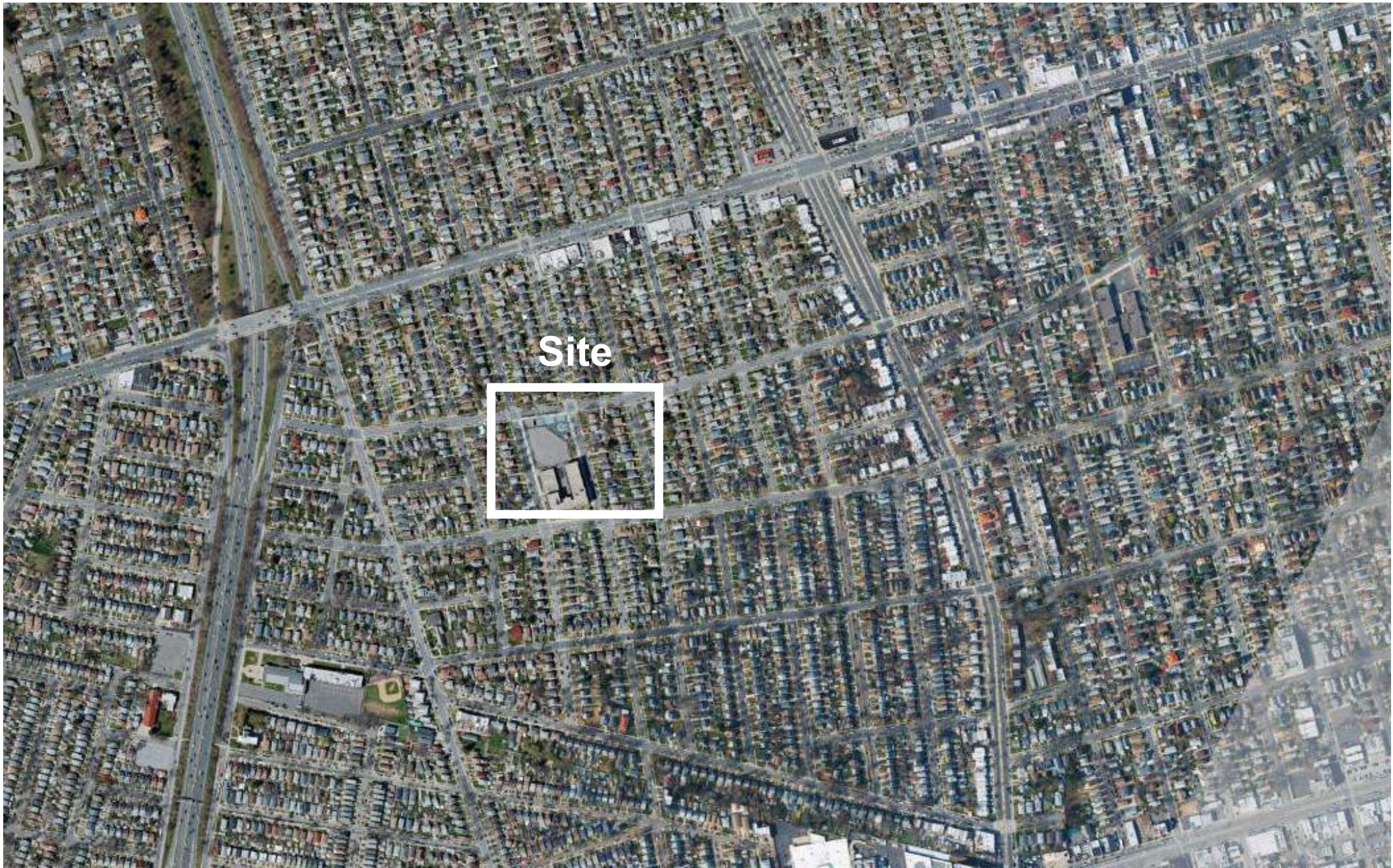
Project Size: 0.062 ac

Goals

- Create a destination point within the park by adding amenities
- Facilitate passive use



Bellerose Reading Garden | Project Location



Source: <http://www.nyc.gov/floodhazardmapper>

Base Flood Elevation (BFE):

Flood Hazard Zones

2015 Preliminary Flood Insurance Rate Map

- V Zone (100-year floodplain subject to wave action)**
Areas along coasts subject to inundation by the 1% annual chance flood event with additional hazards associated with storm-induced waves.
- A Zone (100-year floodplain)**
Areas subject to inundation by the 1% annual chance flood event.
- Shaded X Zone (500-year floodplain)**
Areas within the 0.2% annual chance floodplain, areas of 1% annual chance flooding where average depths are less than 1 foot, areas of 1% annual chance flooding where the contributing drainage area is less than 1 square mile, and areas protected from the 1% annual chance flood by a levee.
- Limit of Moderate Wave Action (LiMWA)**
The inland limit of the area expected to receive 1.5ft or greater breaking waves during the 1% annual chance flood event. Data from 2015 PFIRMs.

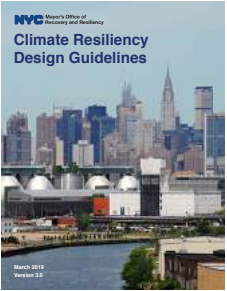
Future Floodplain 2050s

- Future 1% Annual Chance Floodplain (100-year)**
- Future 0.2% Annual Chance Floodplain (500-year)**

Further Information:



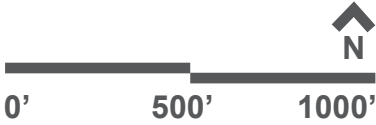
NYC Parks: Design and Planning for Flood Resiliency



NYC MOR: Climate Resiliency Design Guidelines (v3.0)



NYC Parks





Municipal Separate Storm Sewer System (MS4) Legend:

MS4 Drainage Areas



Parks



MS4 Outfalls

- MS4 Outfall
- CSO with MS4 Connection

A municipal separate storm sewer system (MS4) is a publicly-owned conveyance or system of conveyances (including but not limited to streets, ditches, catch basins, curbs, gutters, and storm drains) that is designed or used for collecting or conveying stormwater and that discharges to surface waters of the State.

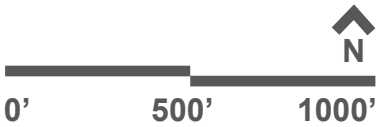
Note: Any Parks site that directly discharges to surface waters of the State (e.g. East River, Harlem River, Hudson River, Jamaica Bay, Atlantic Ocean) is an MS4 site regardless of what the MS4 map shows. Parks properties immediately adjacent to or near bodies of water are likely to be downstream of combined sewer regulator points, making them MS4 sites.

Source: <https://www1.nyc.gov/site/dep/water/municipal-separate-storm-sewer-system.page>



NYC Parks

Bellerose Reading Garden | Municipal Separate Storm Sewer System (MS4)



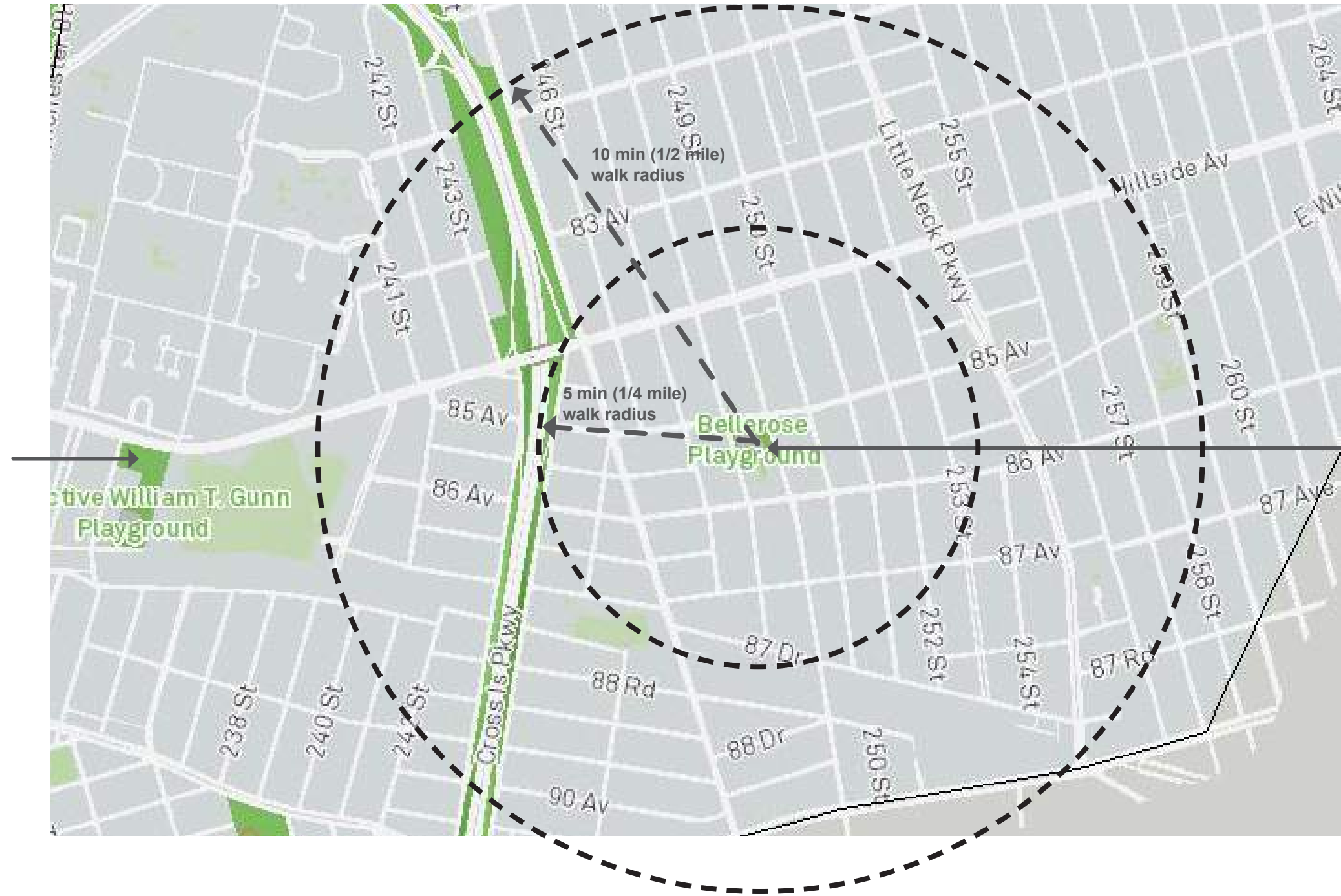


Land Use Categories

- 1 And 2 Family Residential
- Multi-Family Residential
- Mixed Use
- Open Space And Outdoor Recreation
- Commercial
- Institutional
- Industrial
- Parking
- Transportation / Utilities
- Vacant Lots

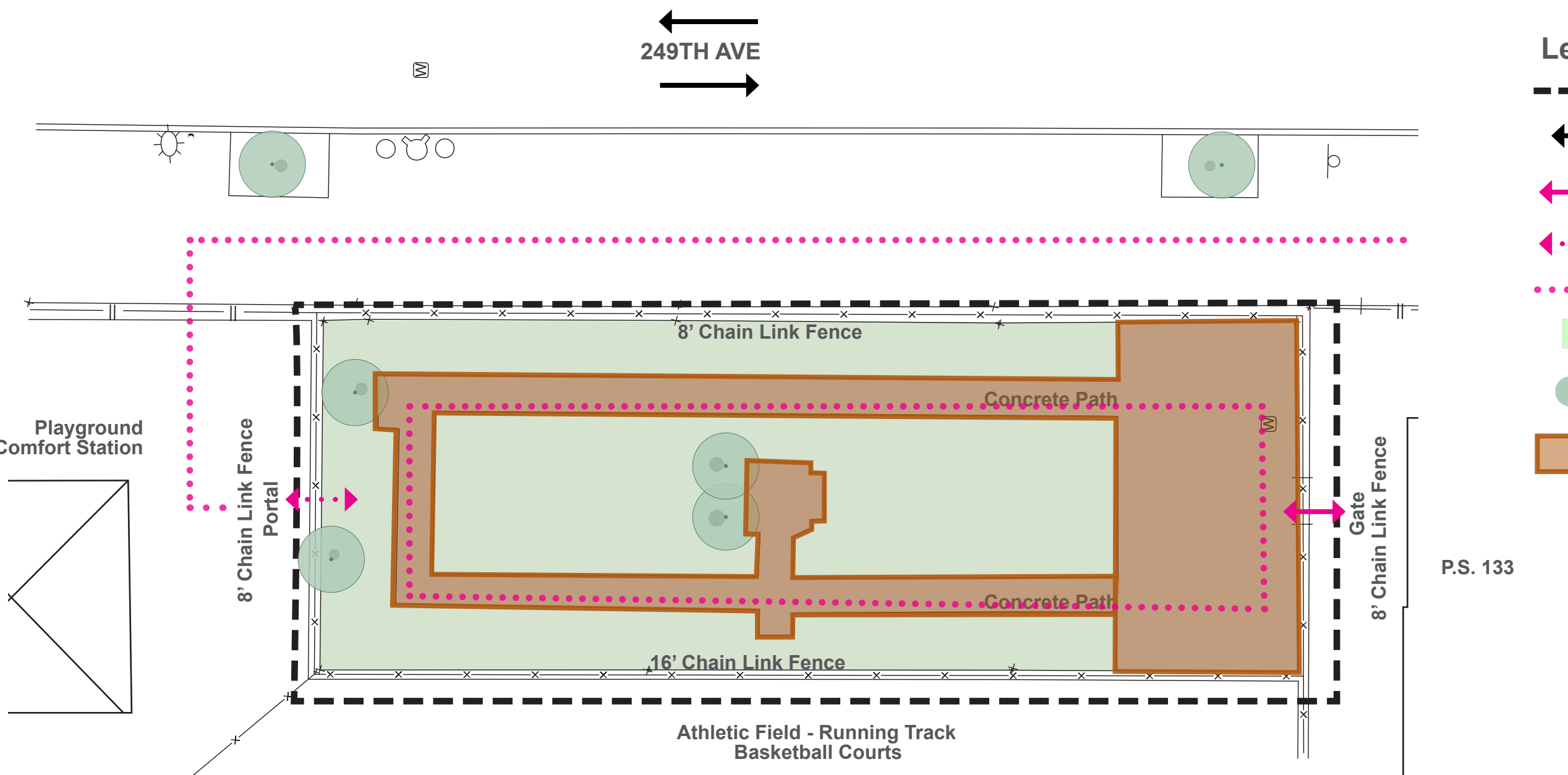


Detective William T. Gunn Playground
Playgrounds
Spray Shower
Comfort station
Handball Courts
Fitness Equipment



Bellerose Playground
Playground
Comfort station
Basketball
Running Track

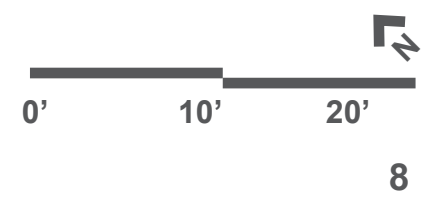




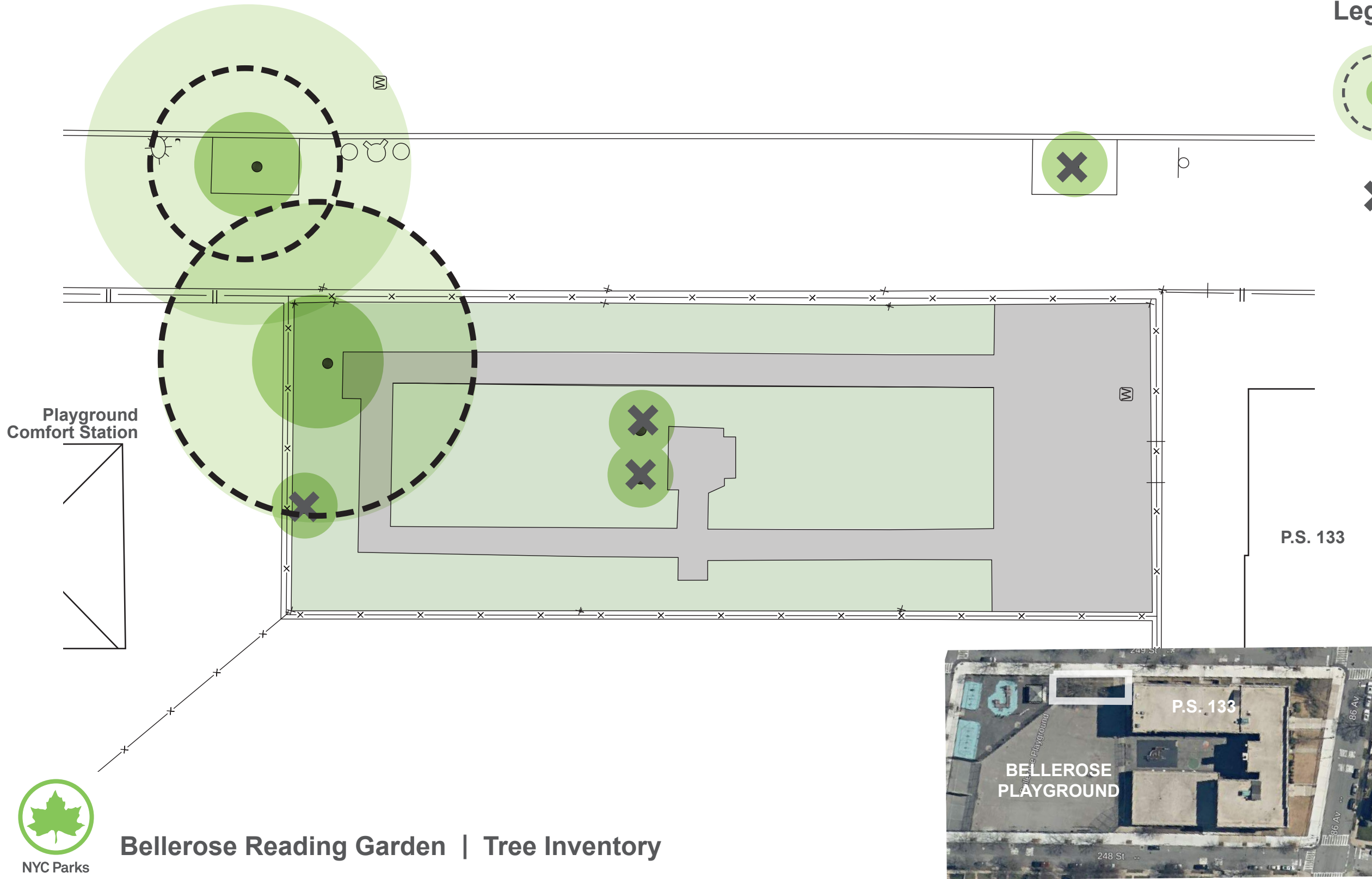
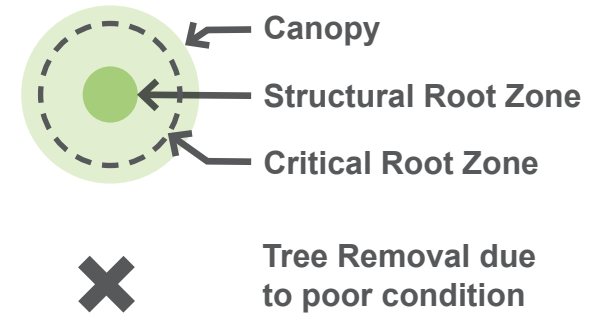
- ### Legend
- Project Limit
 - Traffic
 - Park Entrance
 - Park Portal
 - Pedestrian Traffic
 - Grass
 - Tree
 - Damaged Concrete



Bellerose Reading Garden | Existing Conditions



Legend





1 - Southern gate entrance adjacent to school yard



2 - Northern portal entrance adjacent to playground





1 - North view of garden



Bellerose Reading Garden | Existing Conditions





1 - Southern view of decaying path



2 - Northern view of decaying path



4'-0" STEEL FENCE

GATE ACCESS
TO SIDEALK

TRASH
RECEPTACLE

Comfort
Station

GATE

8'-0" BENCHES

GATE ACCESS TO
PLAYGROUND

GATE ACCESS
TO SCHOOL

P.S. 133

CONCRETE
HEX PAVERS

CONCRETE
PAVEMENT

4'-0" BENCHES

GAME TABLES

COLORED
CONCRETE
PAVEMENT

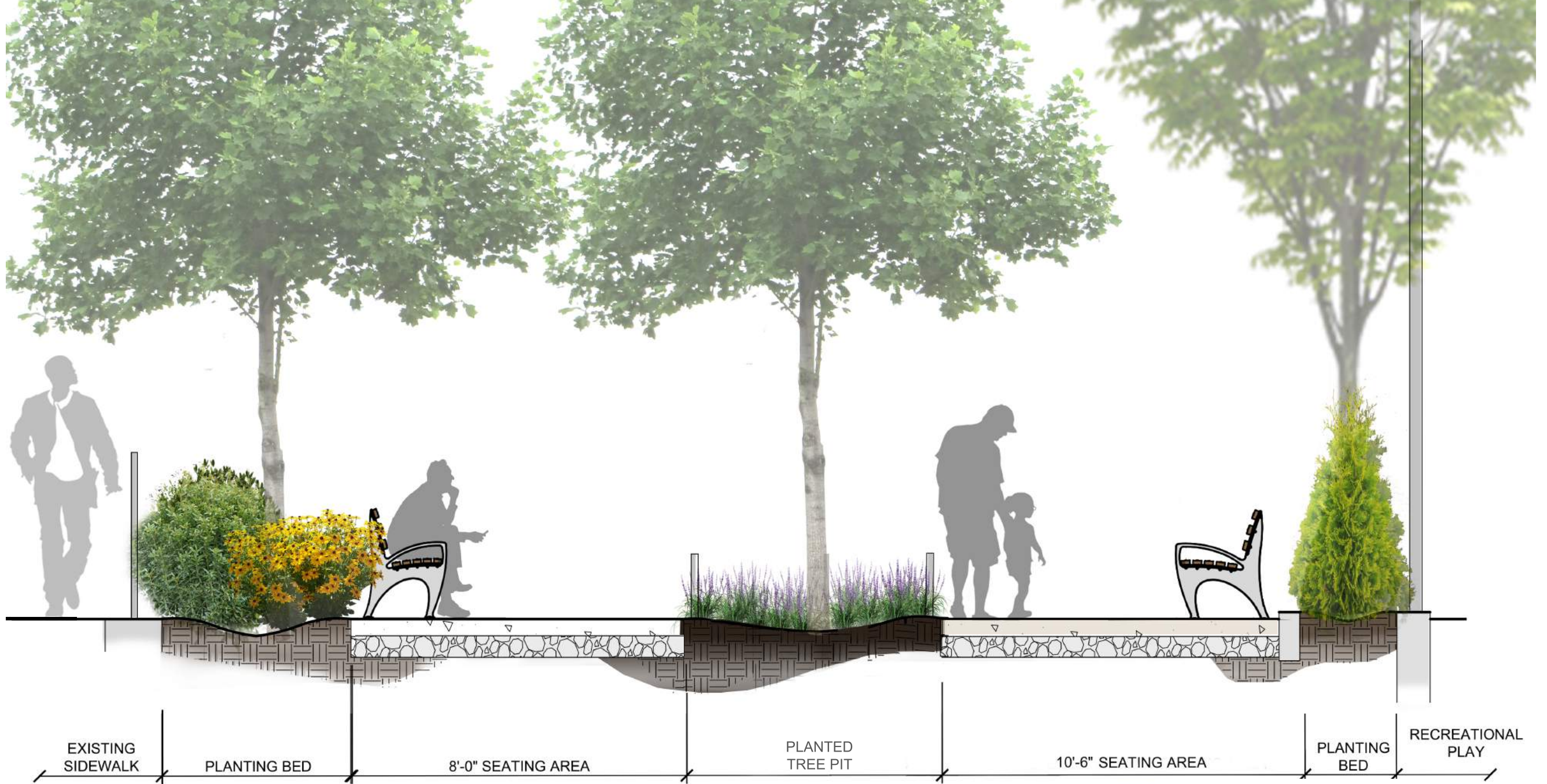
ACCESSIBLE
GAME TABLE



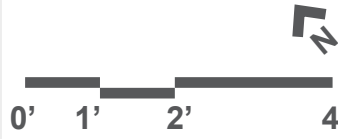
NYC Parks

Bellerose Reading Garden | Schematic Design





Bellerose Reading Garden | Section A



Legend

■ EXISTING FENCES (x = HEIGHT)

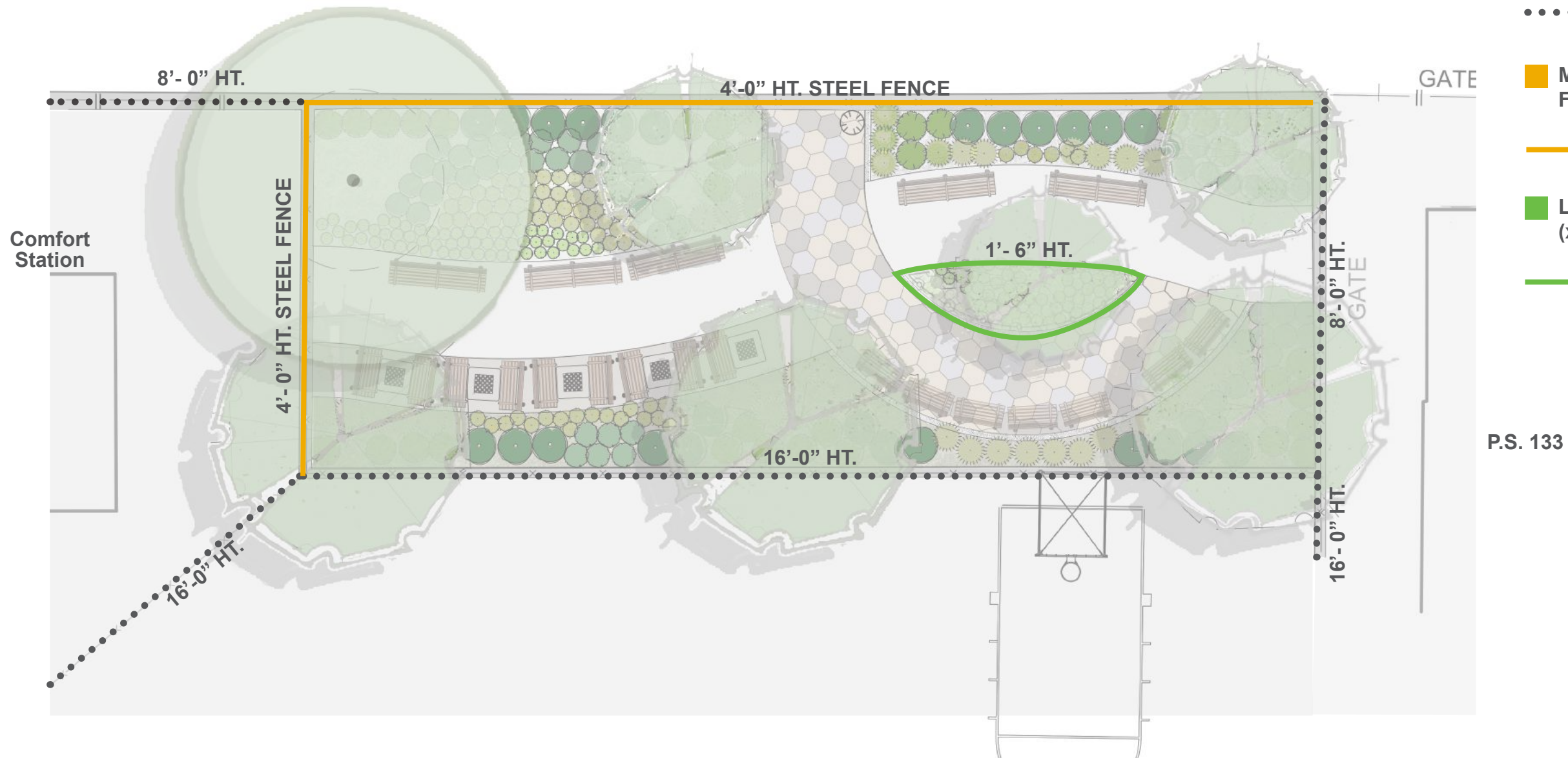
.....^x..... CLF

■ MEDIUM / PERIMETER
FENCES 4' HT. (x = HEIGHT)

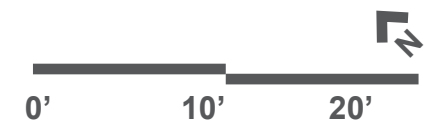
^x STEEL

■ LOW / TREE GUARD TYPE K 1'-6" HT.
(x = HEIGHT)

^x STEEL

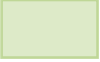


Bellerose Reading Garden | Fence Diagram

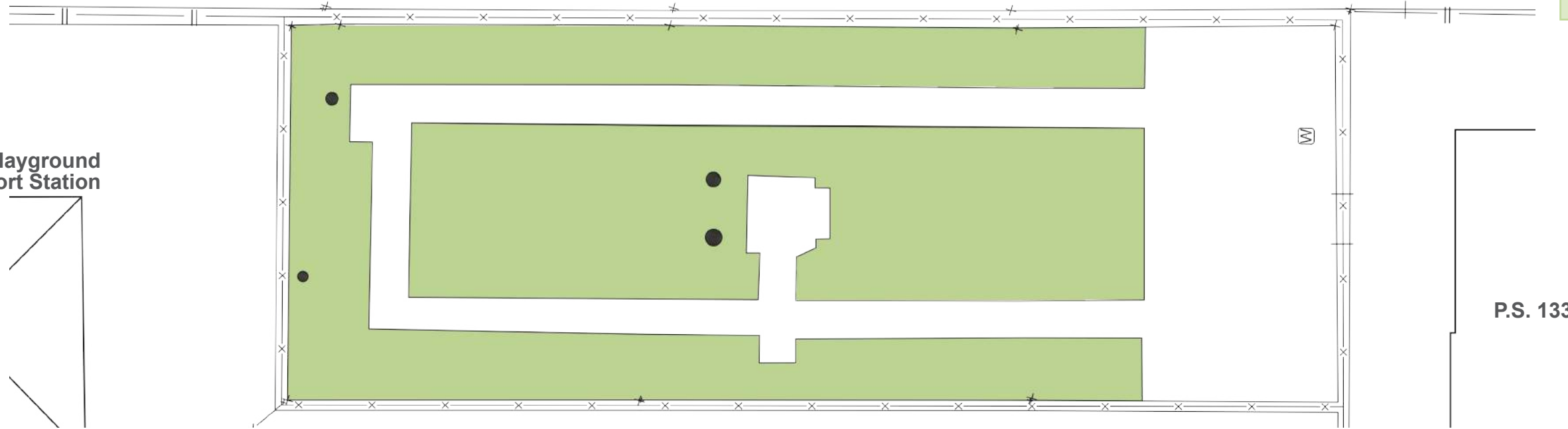


Existing Permeability: 60%

Legend

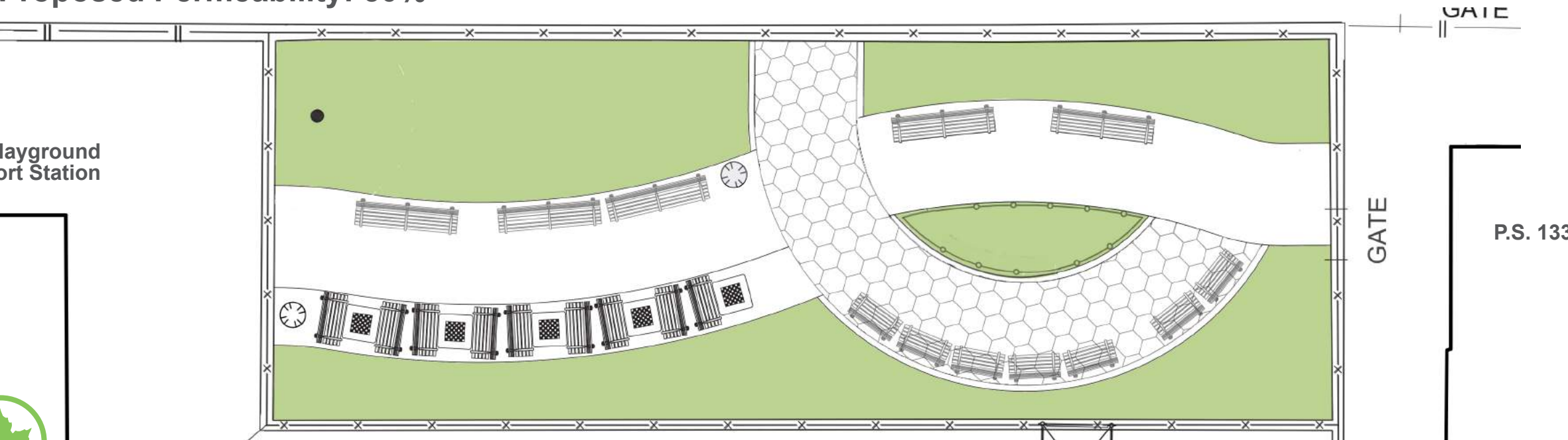
 Permeable Surface

Playground
Comfort Station

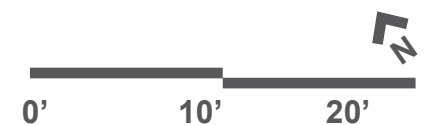


Proposed Permeability: 50%

Playground
Comfort Station



Bellerose Reading Garden | Permeability Analysis





Zelkova Serrata - 'Green Vase'



Acer Campestre - Hedge Maple



Ilex Glabra - 'Compact'
Inkberry Holly



Thuja Occidentalis-
Yellow Ribbon



Hydrangea Paniculata 'Compacta'
Panicked Hydrangea



Amsonia Tabernaemontana - Amsonia
'Blue Star'



Rudbeckia Hirta - Black Eyed Susan



Pennisetum Alopecuroides -
Fountain Grass



Liriope Muscari - Lilyturf





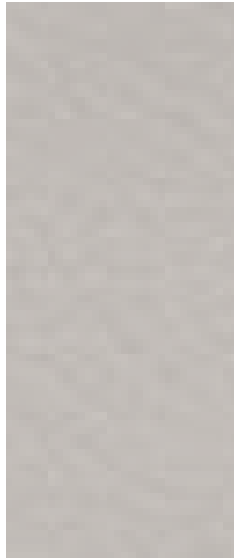
Hanover Prest Pavers 23 1/2"

Charcoal

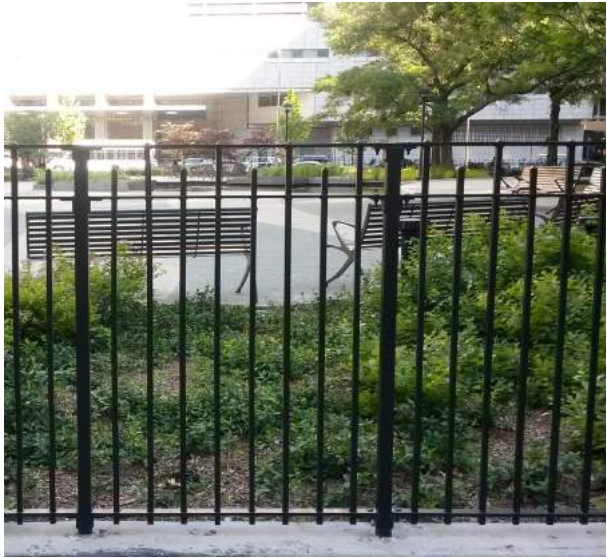


Natural

Cream



**Colored
Concrete
Outback**



4'-0" Steel Fence



Tree Guard - Type K



1964 Worlds Fair Bench



Concrete and Steel Game Table

Accessible Steel Game Table



Public Space Trash Receptacles



4'-0" STEEL FENCE

GATE ACCESS
TO SIDEALK

TRASH
RECEPTACLE

Comfort
Station

GATE

GATE ACCESS TO
PLAYGROUND

8'-0" BENCHES

P.S. 133

GATE ACCESS
TO SCHOOL

CONCRETE
PAVEMENT

CONCRETE
HEX PAVERS

GAME TABLES

4'-0" BENCHES

COLORED
CONCRETE
PAVEMENT

ACCESSIBLE
GAME TABLE

